

2002 AP[®] HUMAN GEOGRAPHY FREE-RESPONSE QUESTIONS

HUMAN GEOGRAPHY

SECTION II

Time—60 minutes

Percent of total grade—50

Directions: You have 60 minutes to answer all three of the following questions. It is suggested that you take a few minutes to plan and outline each answer. Spend approximately one-third of your time (20 minutes) on each question. Illustrate your essay with substantive examples where appropriate. It is not enough to answer a question by merely listing facts. You should present a cogent argument based on your critical analysis of the questions posed and your understanding of geography. Make certain to number each of your answers in the pink booklet as the question is numbered below.



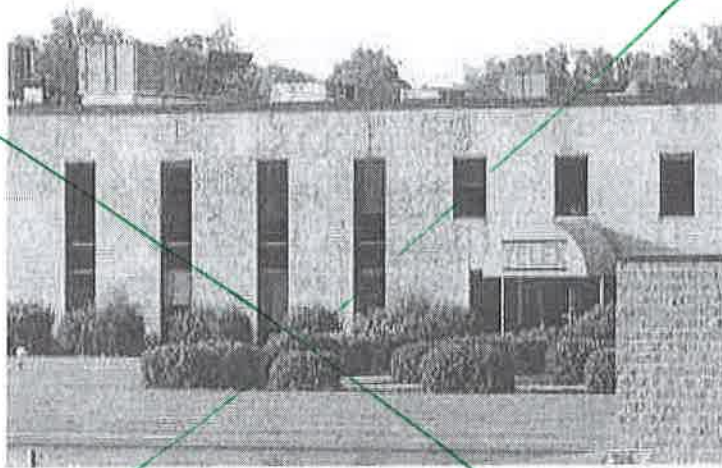
1. A. Define the following concepts as they are used in political geography.
 1. Nation
 2. State
 3. Nation-state
- B. For each of these concepts, name a specific late-twentieth-century example from Region A and a specific late-twentieth-century example from Region B on the map above.
- C. Explain how the pursuit of the nation-state ideal during recent decades has led to conflict in each of the two Regions A and B on the map above.

2003 AP[®] HUMAN GEOGRAPHY FREE-RESPONSE QUESTIONS

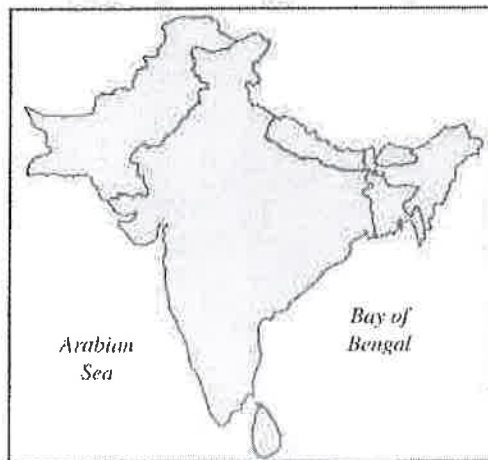
- Unit III*
2. A. Identify and explain ONE way that tourism has diminished regional landscape distinctiveness.
B. Identify and explain ONE way that tourism has enhanced regional landscape distinctiveness.
3. Over the last 150 years, Europe has changed from a source to a destination region for international migration.
- Unit II*
- A. Use the demographic transition model to explain briefly Europe's development as a source of international migrants between 1800 and 1920.
B. Identify and briefly explain ONE factor other than demographic transition that was responsible for Europe's development as a source of migrants to the United States between 1800 and 1920.
C. Briefly explain how THREE aspects of the demographic transition model account for Europe's transformation into a destination region for migrants from North Africa between 1960 and 2000.

END OF EXAMINATION

2006 AP® HUMAN GEOGRAPHY FREE-RESPONSE QUESTIONS



2. The photograph above, taken in a small town in Arkansas, shows a customer service call center in a building that until recently was an automotive parts manufacturing plant.
- Identify two reasons why businesses would choose to locate their call centers in small southern towns.
 - Discuss three disadvantages in the use of call centers as a local economic development strategy.



3. The viability of any state depends on a balance between centripetal and centrifugal forces.
- Define the concepts “centripetal force” and “centrifugal force.”
 - Give a specific example of and explain a centripetal force that affects the viability of any of the states shown on the map above.
 - With reference to a different specific example, explain a centrifugal force that affects the viability of any of the states shown on the map above.

STOP

END OF EXAM

2005 AP[®] HUMAN GEOGRAPHY FREE-RESPONSE QUESTIONS

HUMAN GEOGRAPHY

SECTION II

Time—75 minutes

Percent of total grade—50

Unit 4 IV

Directions: You have 75 minutes to answer all three of the following questions. It is recommended that you spend approximately one-third of your time (25 minutes) on each question. It is suggested that you take up to 5 minutes of this time to plan and outline each answer. While a formal essay is not required, it is not enough to answer a question by merely listing facts. Illustrate your answers with substantive geographic examples where appropriate. Be sure that you number each of your answers, including individual parts, in the answer booklet as the questions are numbered below.

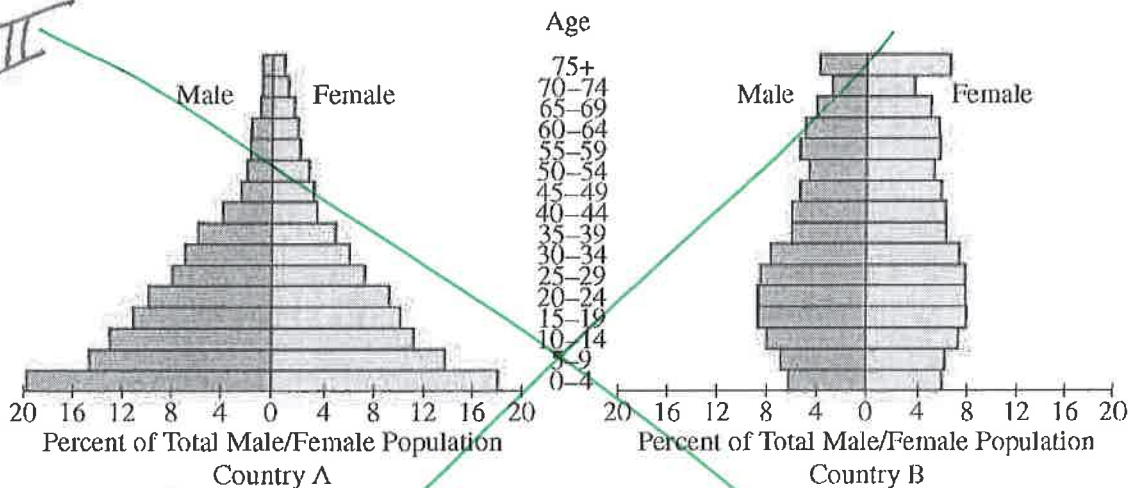
1. The modern state system is engaged in a struggle between the forces of supranationalism and devolution.
 - A. Define both terms and give a geographic example for each.
 - B. With reference to the political and economic geography of Europe, briefly discuss three changes resulting from supranationalism.
 - C. With reference to the political and economic geography of Europe, briefly discuss three changes resulting from devolution.

Unit IV

2010 AP® HUMAN GEOGRAPHY FREE-RESPONSE QUESTIONS

2. Since 1950 many states have faced challenges in developing a strong national identity.
- A. Using contemporary examples, explain how each of the following has contributed to the development of national identity and the strengthening of a state.
1. Economic development
 2. Relocation of a state's capital (since 1950)
- B. Using contemporary examples, explain how each of the following may detract from the development of national identity and weaken a state.
1. Ethnicity
 2. Transportation infrastructure

Unit II



3. The population pyramids above represent two countries at different stages of the demographic transition and economic development.
- A. Explain the demographic characteristics of each country above with respect to the demographic transition model.
- B. Discuss ONE positive impact of EACH country's population structure on its economic development.
- C. Discuss ONE negative impact of EACH country's population structure on its economic development.

STOP

END OF EXAM

2011 AP[®] HUMAN GEOGRAPHY FREE-RESPONSE QUESTIONS

2. In 1798 Thomas Robert Malthus published *An Essay on the Principle of Population* in which he argued that population growth will inevitably outpace food production, resulting in widespread famine.
- A. Identify and explain TWO reasons why some geographers today believe Malthus' theory can be used to predict future population issues.
 - B. Identify and explain TWO reasons why some geographers today believe Malthus' theory cannot be used to predict future population issues.